



33 Oakway

Raynes Park, Wimbledon SW20 9JE



ACCOMMODATION

- 4 Bedrooms
- Entrance Hall
- Kitchen
- Living Room
- Dining Room
- Conservatory
- 2 Shower Rooms (One En-Suite)
- Garden
- Off-Street Parking
- No chain

PRICE ON APPLICATION

0.8 miles Raynes Park Station
0.7 miles from Motpur Park
30 Miles to London Gatwick
12.3 Miles to London Waterloo

A spacious 4 bedroom terraced house with great potential for an incoming purchaser to put their own 'stamp' on it.

This charming house affords generous family/entertaining space and is approached via a private drive with off-street parking. On the ground floor the house comprises: entrance hall; living room; dining room; a conservatory with doors to the garden and a kitchen, also with doors to the garden.

On the first floor there are 3 good size bedrooms and a family shower room. On the second floor is another bedroom with an en-suite shower room.

To the rear of the house is a well-proportioned garden with a large garden shed at the bottom, which could easily be used as a summer house.

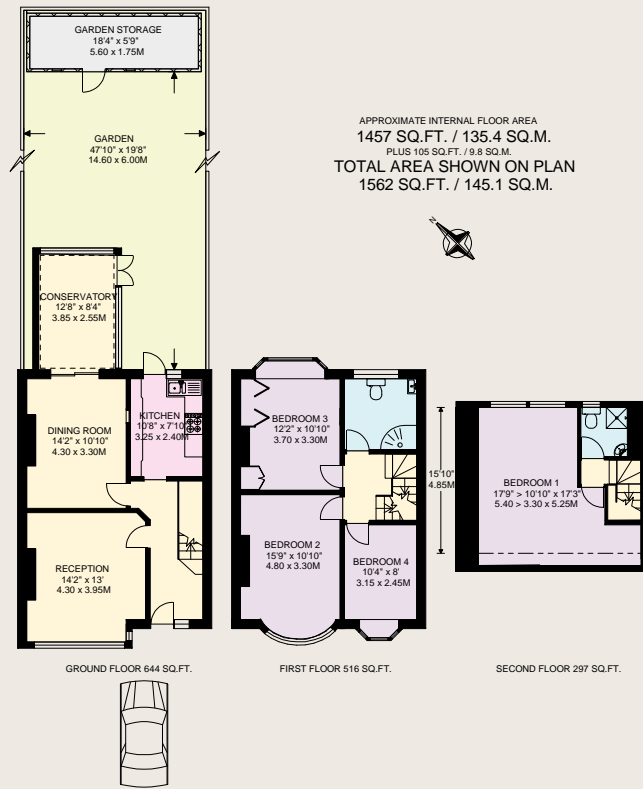


Oakway is conveniently located for the many local schools in the area and the bus service on

Grand Drive. It is also close to Cannon Hill Common, Morden Park and the Raynes Park

Lawn Tennis Club. Please note there is also no chain on this property.





FLOORPLAN PRODUCED FOR "ROBERT HOLMES & COMPANY" BY FLOORPLANNERS 0780 122 8850.
 ALL MEASUREMENTS ARE MAXIMUM, AND INCLUDE WINDOW BAYS AND WARDROBES WHERE APPLICABLE.
 WHERE A ROOM HAS A SLOPING CEILING, THE DOTTED LINE MARKS 1.50M HEIGHT,
 AND THE MEASUREMENTS ARE SHOWN AT FLOOR LEVEL.

