

Durham Road

Wimbledon, London, SW20 0TW



A smartly appointed recently refurbished ground floor 3 bedroom apartment, set on a quiet tree lined road with easy access to shops, transport and restaurants.

£450,000

Freehold

- Recently Refurbished
- 3 Bedrooms
- 2 Bathroom
- Utility room
- Outside Space
- Off Street parking
- Easy access to shops
- Ground Floor

48 Durham Road

Wimbledon, London, SW20 0TW

A smartly appointed recently refurbished ground floor 3 bedroom apartment, set on a quiet tree lined road with easy access to shops, transport and restaurants. The Apartment combines contemporary living with a much sought after location in leafy Wimbledon, and conveniently located for Raynes Park station and Wimbledon mainline and underground station with direct links to Waterloo.

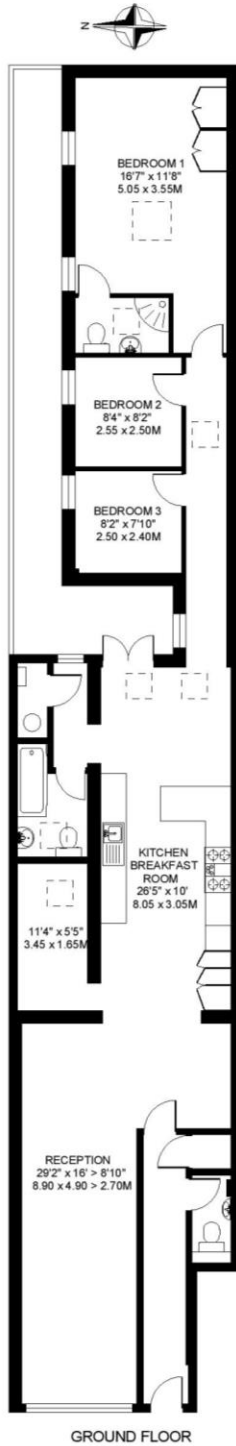


48 Durham Road
Wimbledon, London, SW20 0TW



48 Durham Road
Wimbledon, London, SW20 0TW

APPROXIMATE INTERNAL FLOOR AREA
1350 SQ.FT. / 125.4 SQ.M.



FLOORPLAN PRODUCED FOR "ROBERT HOLMES & COMPANY" BY FLOORPLANNERS 0780 122 8850
ALL MEASUREMENTS ARE MAXIMUM, AND INCLUDE WINDOW BAYS AND WARDROBES WHERE APPLICABLE

VIEWINGS: By appointment through Robert Holmes & Co 020 8947 9833. Would you like to visit our website?
www.robertholmes.co.uk. If you give us your e-mail address we will be able to send you immediate news of our latest instructions.

N.B. For clarification, we wish to inform prospective purchasers that we have prepared these sales particulars as a general guide. All statements contained herein are made without responsibility and do not constitute part of an offer or contract. Measurements are approximate and should not be relied upon