

35 Denmark Road

Wimbledon Village, London SW19 4PQ



A delightful semi-detached period house with south facing garden and fantastic self-contained studio located in a quiet and sought after residential road close to local shops, restaurants, Wimbledon Common and the Village

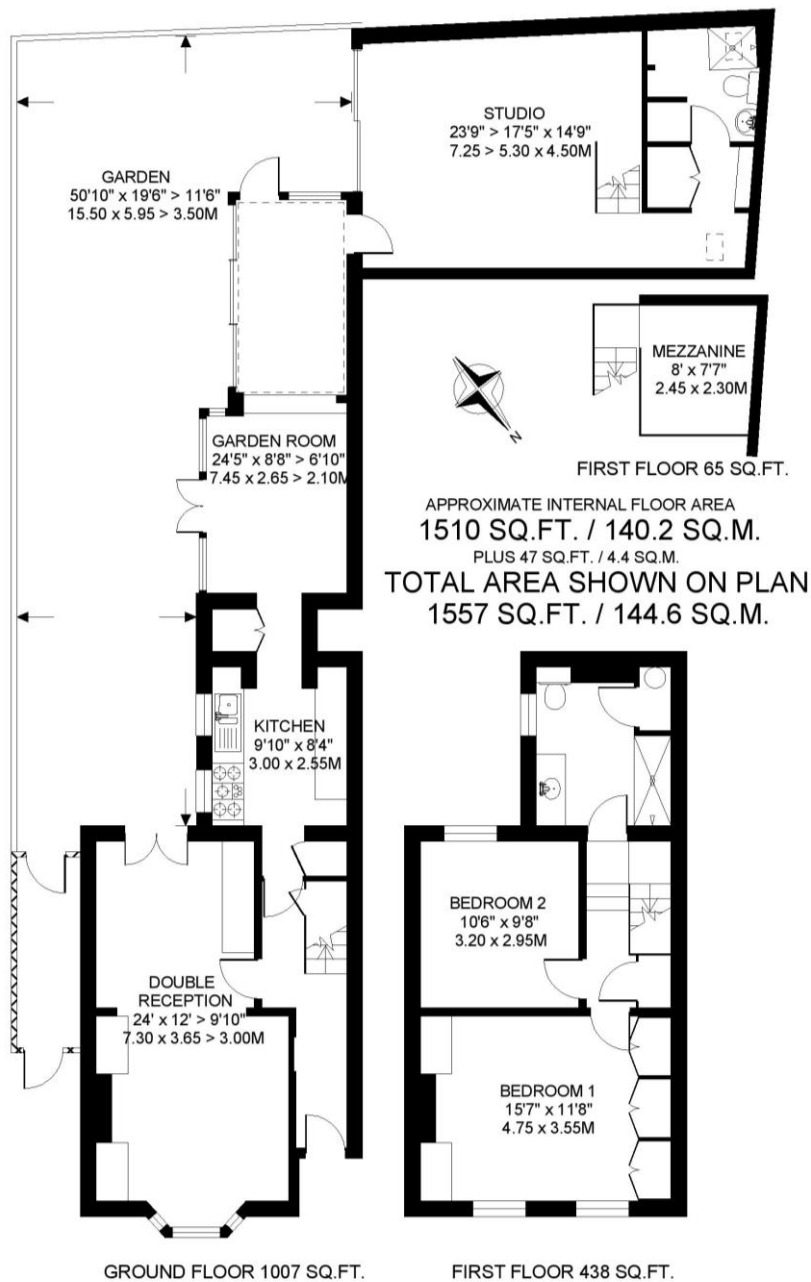
£1,495,000

Freehold

- Double Reception Room
- Fitted Kitchen
- Dining/Garden Room
- 3 Bedrooms (including studio)
- 2 Bath/Shower Rooms (including studio)
- Studio with mezzanine and utility room
- South facing Garden
- Covered Side Access

39 DENMARK ROAD, WIMBLEDON VILLAGE, LONDON SW19 4PQ

ER/D



FLOORPLAN PRODUCED FOR "ROBERT HOLMES & COMPANY" BY FLOORPLANNERS 0780 122 8850
 ALL MEASUREMENTS ARE MAXIMUM, AND INCLUDE WINDOW BAYS AND WARDROBES WHERE APPLICABLE
 WHERE A ROOM HAS A SLOPING CEILING, THE DOTTED LINE MARKS 1.50M HEIGHT,
 AND THE MEASUREMENTS ARE SHOWN AT FLOOR LEVEL

VIEWINGS: By appointment through Robert Holmes & Co 020 8947 9833. Would you like to visit our website? www.robertholmes.co.uk. If you give us your e-mail address we will be able to send you immediate news of our latest instructions.

N.B. For clarification, we wish to inform prospective purchasers that we have prepared these sales particulars as a general guide. All statements contained herein are made without responsibility and do not constitute part of an offer or contract. Measurements are approximate and should not be relied upon for carpets or furnishings. We have not carried out a survey, or tested the services, appliances or specific fittings.